

Growing Suburbs Fund

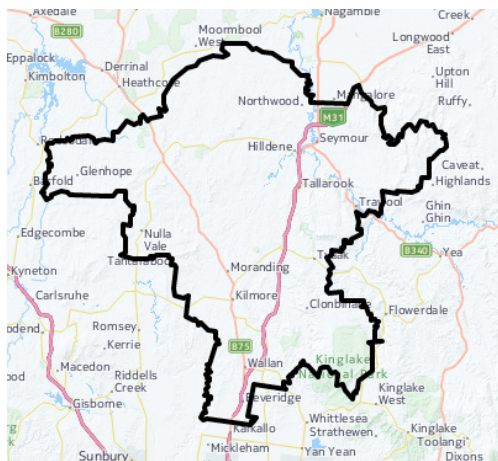
The Growing Suburbs Fund is providing much needed funding to help interface councils deliver new local infrastructure. The \$150 million investment is making a big difference in the day-to-day lives of outer suburban families by meeting critical local infrastructure needs for communities in Melbourne's diverse and fast-growing outer suburbs.



Wallan Town Centre Heart Public Realm Project

57 – 62 High Street, Wallan 3756

MITCHELL SHIRE COUNCIL



MITCHELL SHIRE COUNCIL

Mitchell Shire is located approximately 80 km north of Melbourne, abutting the northern borders of Hume City Council. It is characterised by a significant growth corridor in the southern area of the shire and rural areas to the north.

The local economy is primarily agriculture and food manufacturing. It covers an area of 2,862 sq km with a population of approximately 40,000 which is expected to grow to more than 89,000 by 2036¹.

1 Victoria in the Future, 2014 <http://profile.id.com.au/mitchell>

PROJECT DESCRIPTION

The Growing Suburbs Fund will help deliver a range of public realm improvements in the heart of Wallan.

A grant from the Growing Suburbs Fund will be used to fund the works, which will include:

- Construction of a new town square & free library plaza
- Relocation of the war memorial
- Landscaping
- Improved access to car parking spaces

The project will benefit the local community by improving walkability and enhancing the social and economic vibrancy of the town centre in the growing area.

Expected completion: Mid 2018

Growing Suburbs Fund: \$2,191,569

Other projects in Mitchell Shire to receive funding from the 2016/17 Growing Suburbs Fund are:

- Mandalay Community Centre (\$2,140,000)
- Broadford Community Centre Revitalisation (\$565,000)

Read about other Growing Suburbs Fund Projects on www.localgovernment.vic.gov.au/gsf

For more information regarding this project contact Local Infrastructure, DELWP.
Email: gsf@delwp.vic.gov.au and Ph: 9948 8551